

CENTER BOLTED MOUNT

CBM mounts efficiently isolate vibration and static/dynamic loads in all directions, attenuate shock inputs, and prevent transmission of structure-born noise. Made with neoprene elastomer, which has good resistance to industrial oils and grease compounds, and an operational temperature range of -40°F to 200°F. The steel tube provides built-in rebound protection.

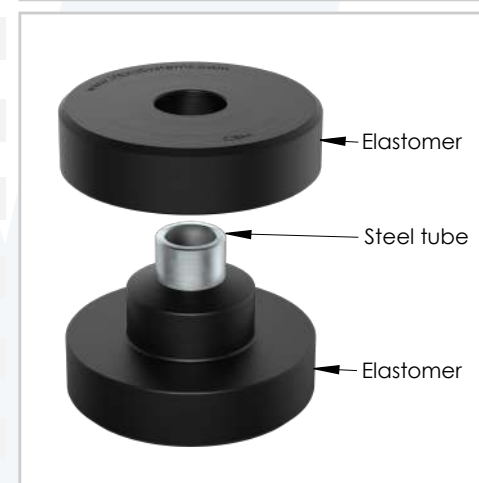
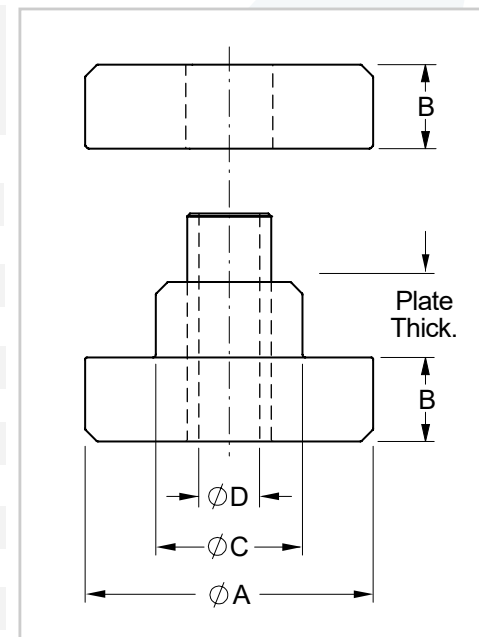
Recommended for:

- Engines, diesel-generator systems, compressors, pumps, fans, A/C systems, radiators, trucks' cabs and fuel tanks.
- Transfer plates/frames and intermediate mounting systems between equipment and bases/foundations.
- Accessory equipment and miscellaneous industrial machinery applications.

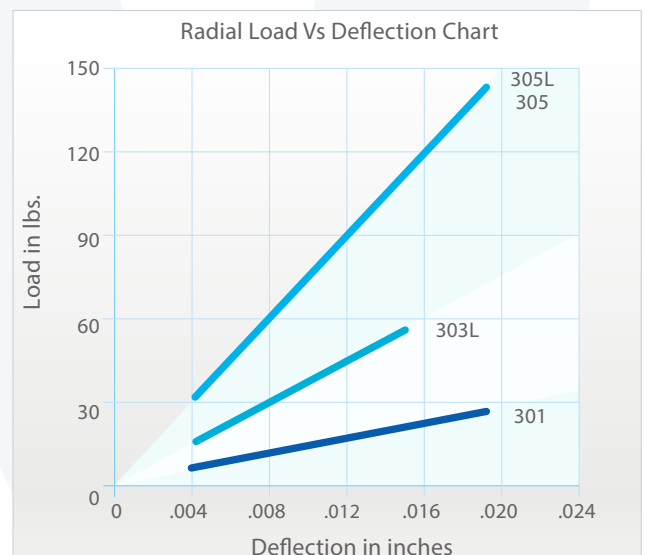
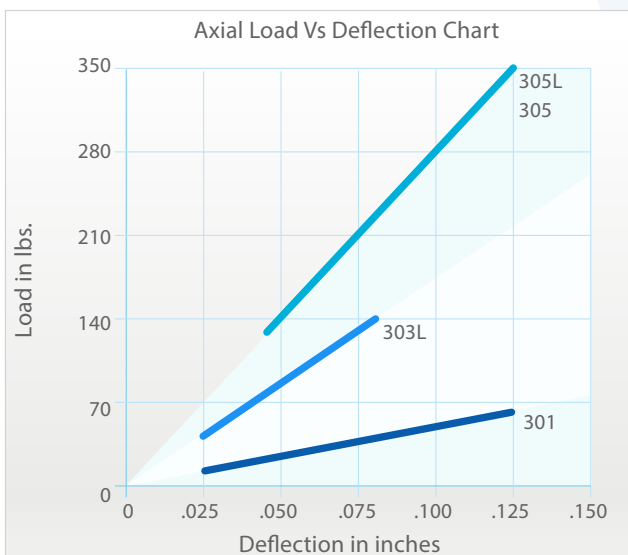
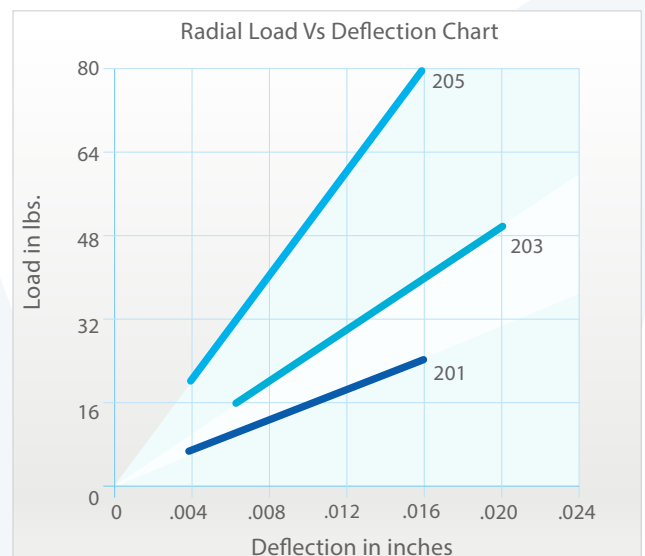
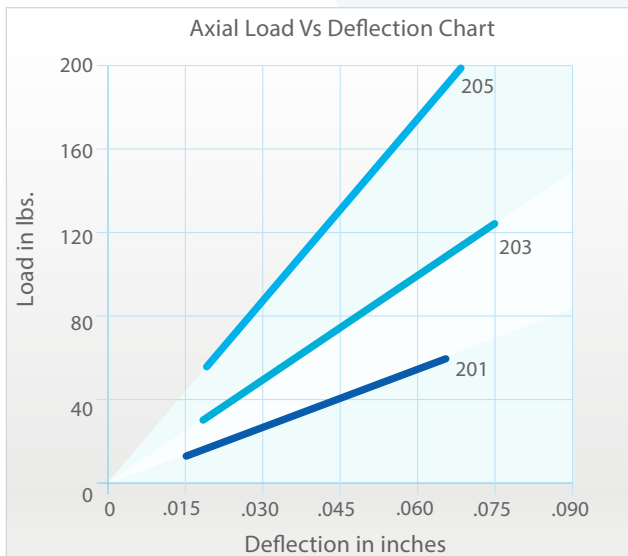
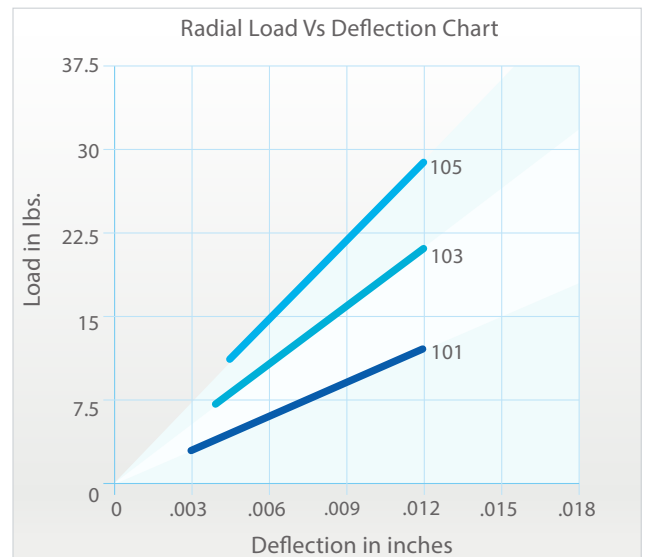
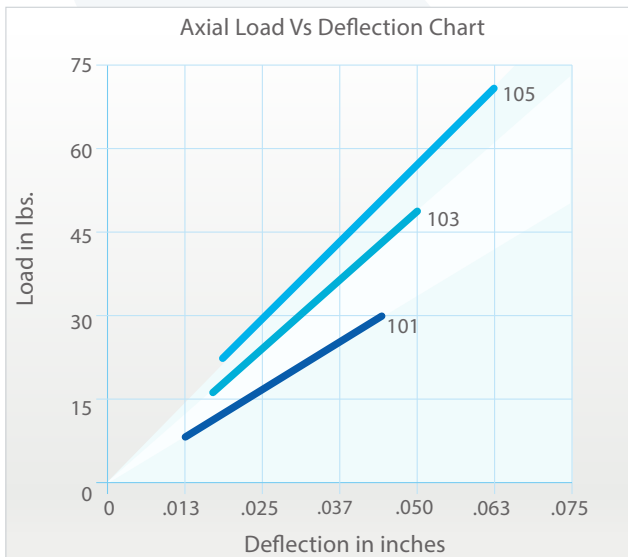
Features:

- ✓ Top & bottom parts positions are reversible.
- ✓ Drastically reduce mechanical vibration transmission.
- ✓ Provides excellent resistance against vertical & lateral forces.
- ✓ Long service life.
- ✓ Low-cost installation & easy to install.
- ✓ Available in wide range of sizes and loads.

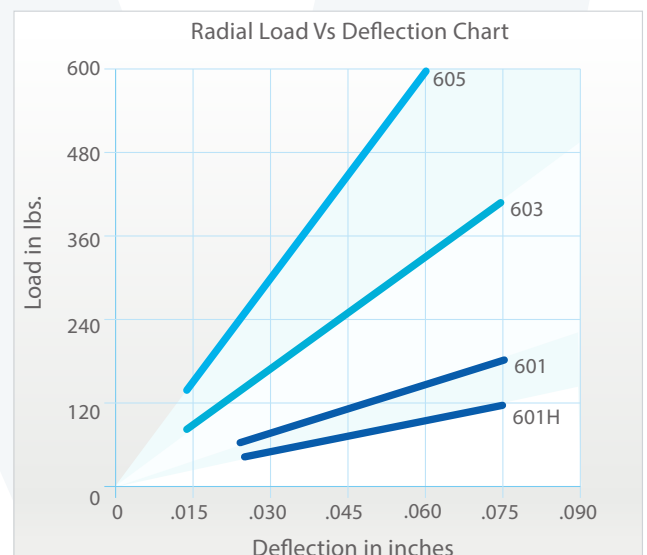
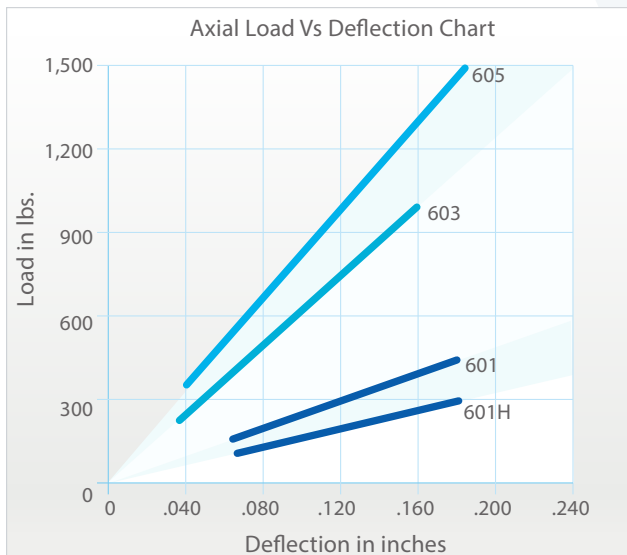
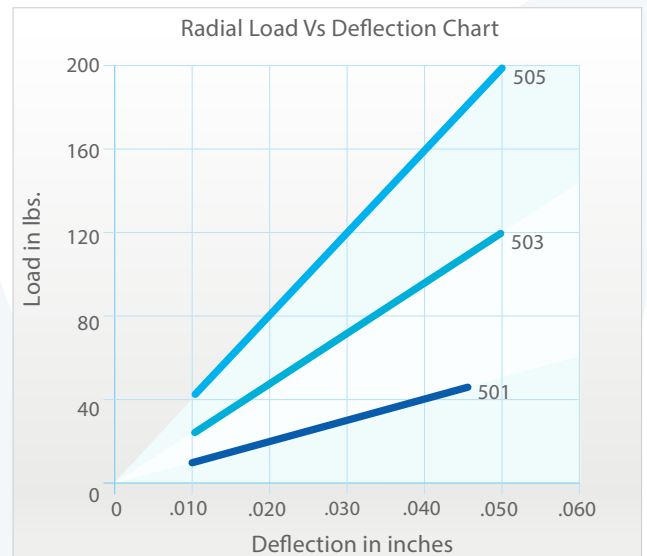
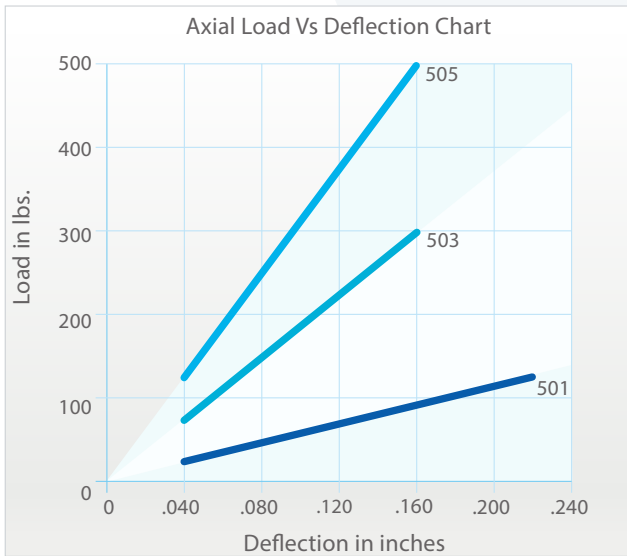
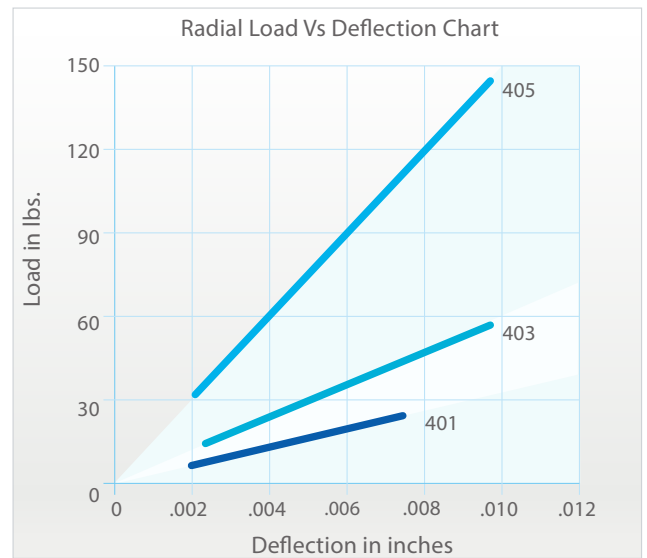
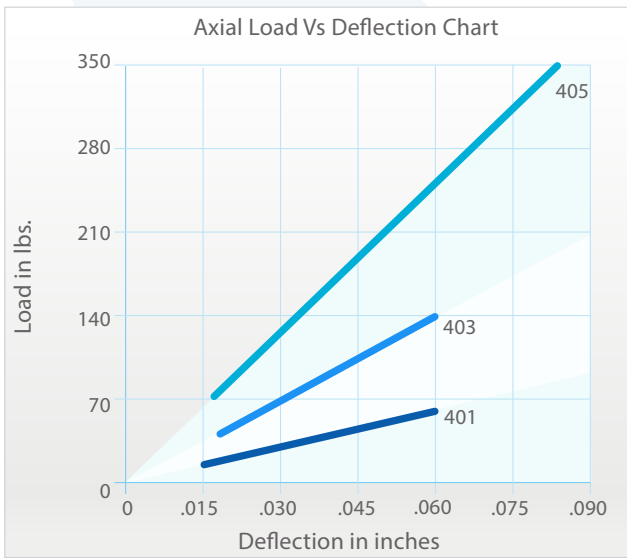
Model	Rated Axial Load (lbs)	Rated Radial Load (lbs)	Dimension in inches (in)						
			A	B	C	D	Bolt size	Plate Thick.	Mounting Hole Ø
CBM 101	30	12	.75	.25	.51	.26	1/4	.125	.500
CBM 103	50	20	.75	.25	.51	.26	1/4	.125	.500
CBM 105	70	28	.75	.25	.51	.26	1/4	.125	.500
CBM 201	60	24	1.25	.50	.76	.32	5/16	.125	.750
CBM 203	125	50	1.25	.50	.76	.32	5/16	.125	.750
CBM 205	200	80	1.25	.50	.76	.32	5/16	.125	.750
CBM 301	60	24	1.20	.50	.76	.39	3/8	.187	.750
CBM 303L	140	56	1.20	.50	.76	.39	3/8	.187	.750
CBM 305L	350	140	1.20	.50	.76	.39	3/8	.187	.750
CBM 305	350	140	1.25	.50	.76	.39	3/8	.125	.750
CBM 401	60	24	1.20	.50	.76	.39	3/8	.375	.750
CBM 403	140	56	1.20	.50	.76	.39	3/8	.375	.750
CBM 405	350	140	1.20	.50	.76	.39	3/8	.375	.750
CBM 501	125	50	1.90	.78	1.27	.53	1/2	.500	1.260
CBM 503	300	120	1.90	.78	1.27	.53	1/2	.500	1.260
CBM 505	500	200	1.90	.78	1.27	.53	1/2	.500	1.260
CBM 601H	300	120	2.50	.90	1.54	.64	5/8	.750	1.530
CBM 601	450	180	3	.86	1.54	.64	5/8	.750	1.530
CBM 603	1,000	400	3	.86	1.54	.64	5/8	.750	1.530
CBM 605	1,500	600	3	.86	1.52	.64	5/8	.750	1.510
CBM 703	1,000	400	3.50	1	2.30	.94	7/8	1.000	2.225
CBM 703-M	1,200	480	3.50	1	2.30	.76	3/4	1.000	2.225
CBM 705-M	2,000	800	3.50	1	2.30	.76	3/4	1.000	2.225
CBM 803	2,000	800	5	1.25	2.54	1.005	1	1.250	2.535
CBM 805	4,500	1,800	5	1.25	2.54	1.005	1	1.250	2.535



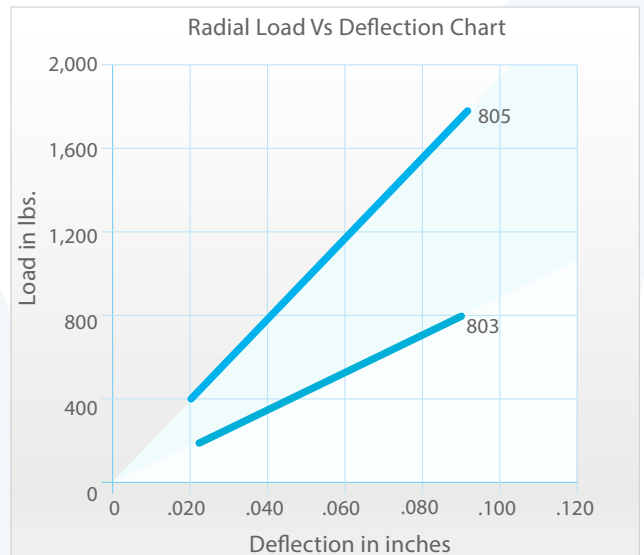
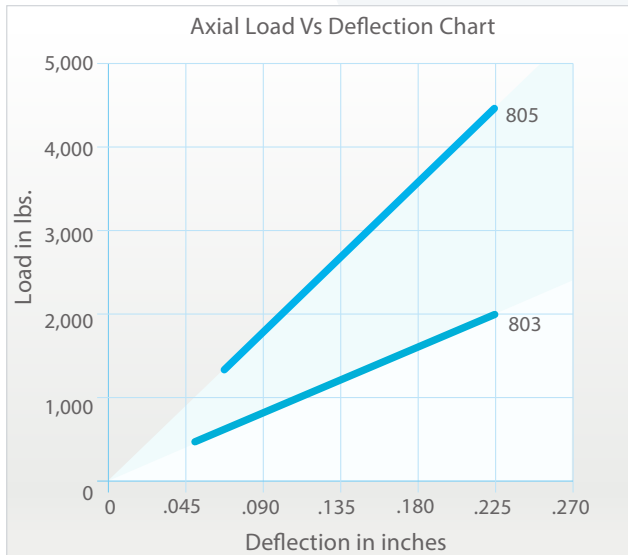
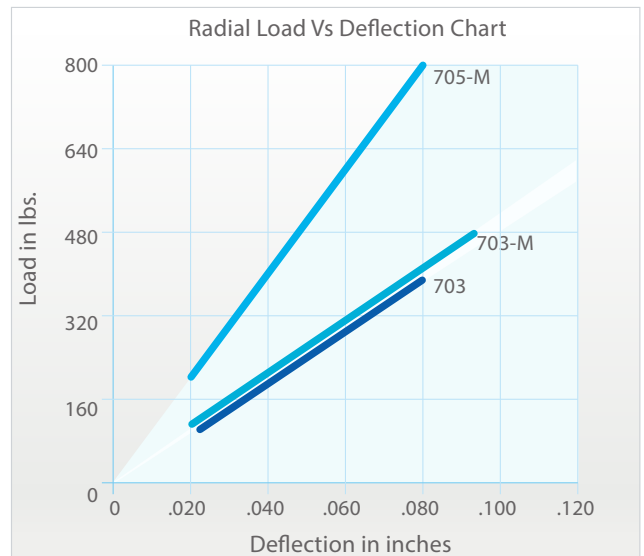
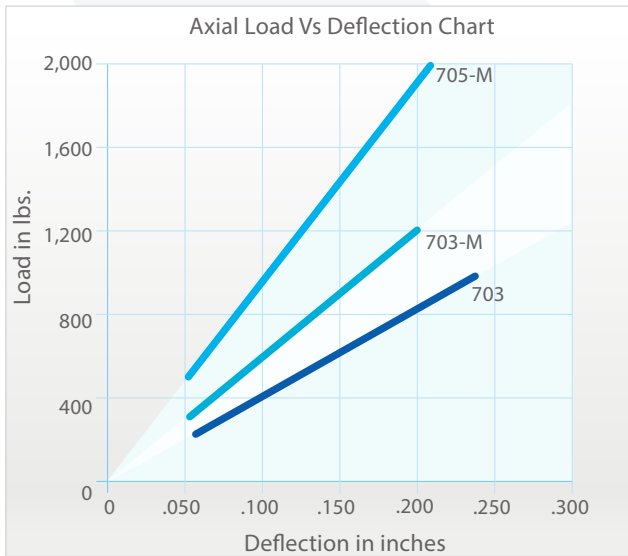
CENTER BOLTED MOUNT



CENTER BOLTED MOUNT



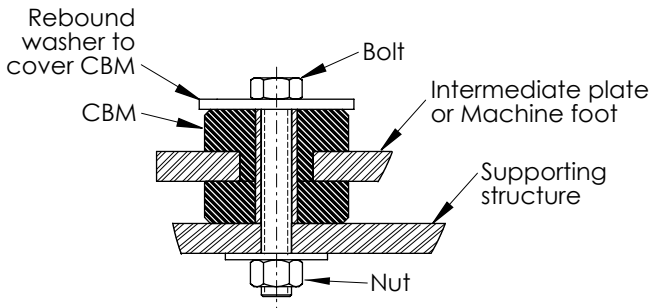
CENTER BOLTED MOUNT



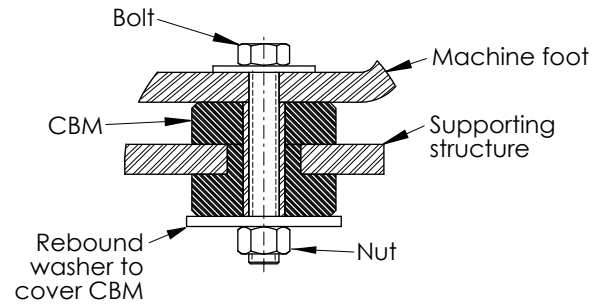
CENTER BOLTED MOUNT

Typical Installations:

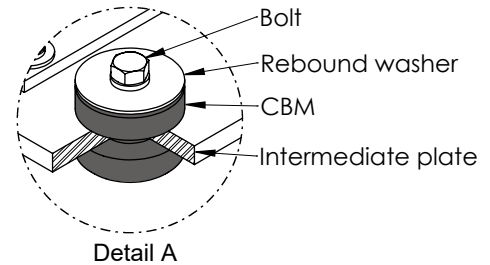
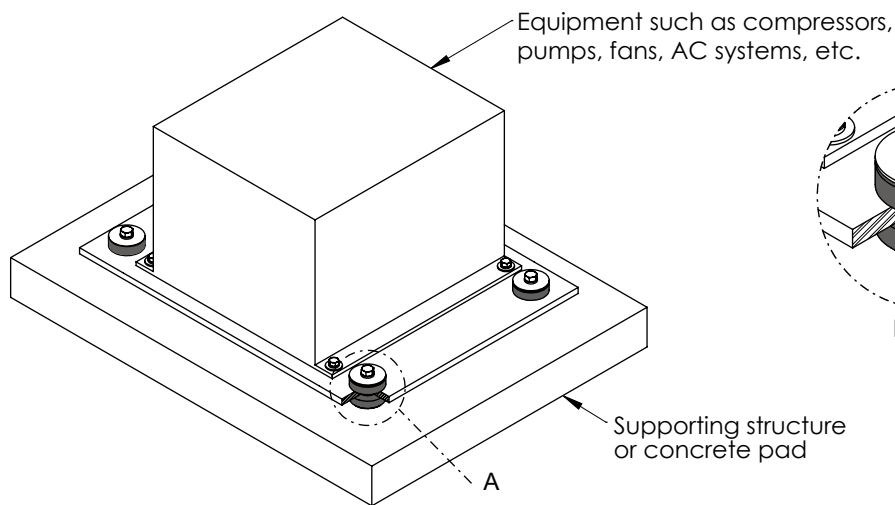
- 1) Remove all burrs and sharp corners from each mounting hole. Recommended chamfer/radius on both edges of the mounting hole of minimum R 1/16".
- 2) Assembly CBM and intermediate plate/machine foot on supporting structure using bolts, washers, and nuts. Make sure the rebound washer's diameter covers CBM's outside diameter.
- 3) Fasten tightly the bolt and nut until the rebound washer touches the CBM's steel tube.



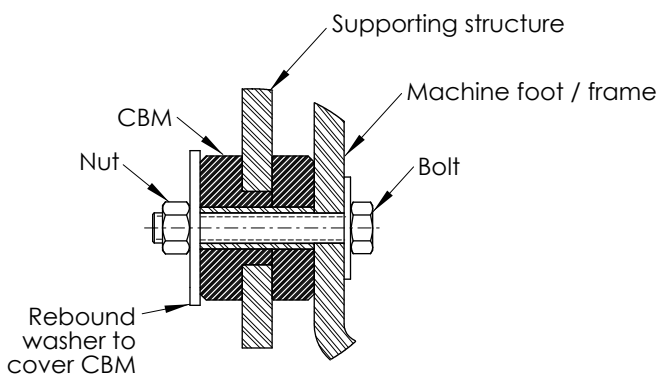
Intermediate mounting plate installation



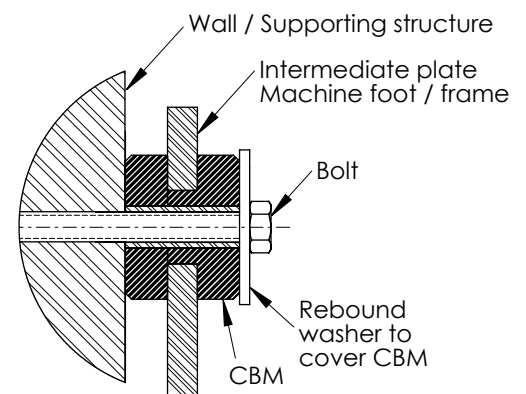
Direct installation



Detail A



Vertical installation
Direct mounting frame



Vertical installation
Intermediate mounting plate