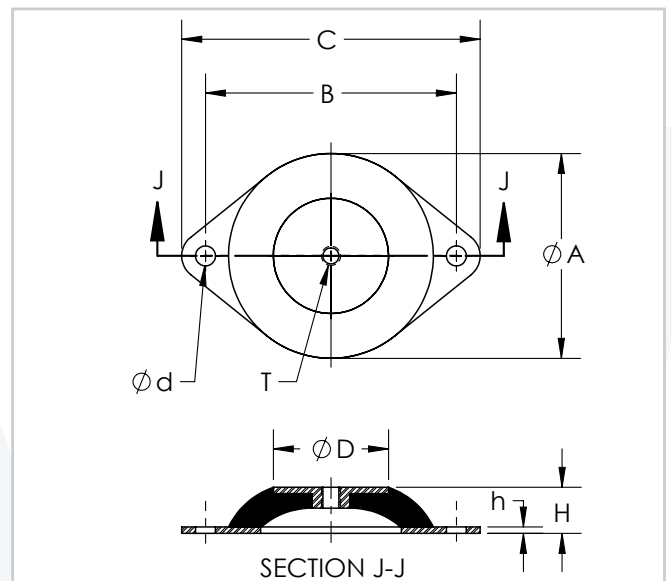


COMPRESSION MOUNTS

LF-Series compression mounts have great vertical-direction flexibility, and significantly reduce transfer of vibration to the supporting structure. These models are designed for installation on applications with continuous and intermittent loads. Elastomeric bodies of the isolators effectively prevent metal-to-metal contact.

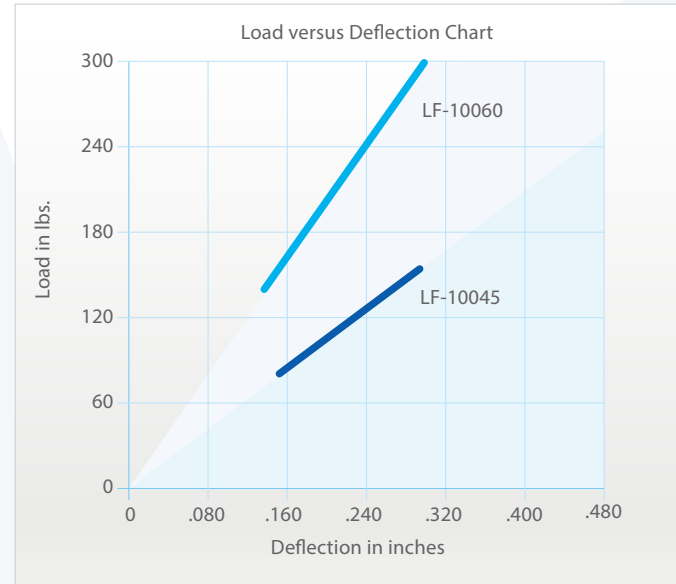
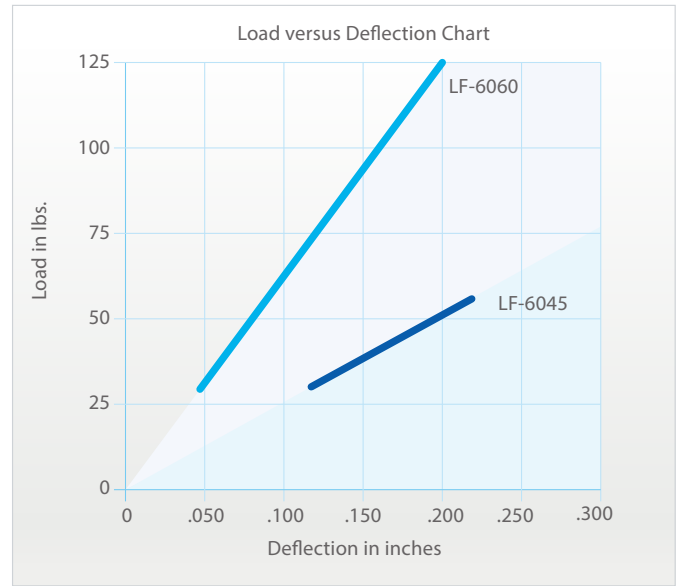
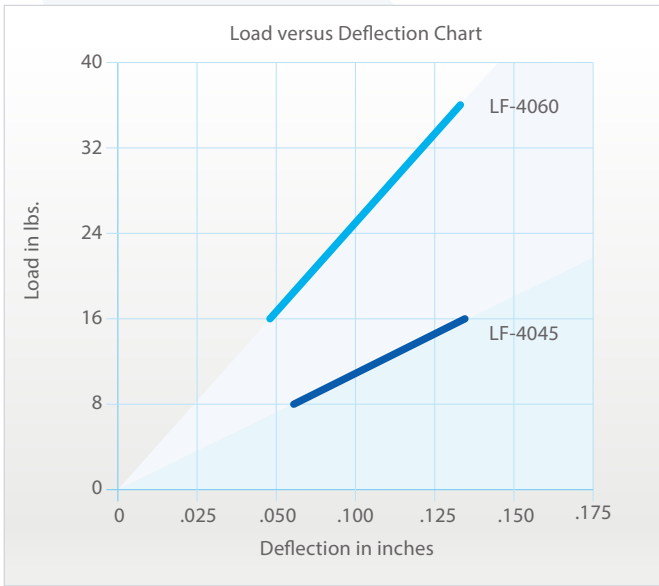
Recommended for:

Motors, fans, pumps, compressors, transformers, electrical, lab-testing equipment and cabinet enclosures, as well as HVAC and other industrial equipment.

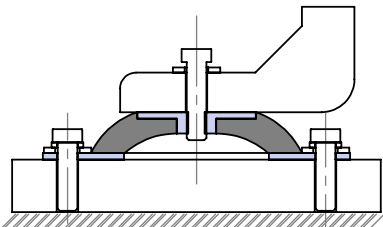


Model	Maximum Load (lbs)	Mount Dimensions (inch)								
		A	B	C	D	H	h	d	T	Color
LF 4045	16	1.80	2	2.50	.90	.70	.08	.24	1/4-20	Black
LF 4060	36	1.80	2	2.50	.90	.70	.08	.24	1/4-20	Black
LF 6045	60	2.38	3	3.50	1.20	.90	.08	.24	1/4-20	Black
LF 6060	125	2.38	3	3.50	1.20	.90	.08	.24	1/4-20	Black
LF 8045	150	3.38	3.95	4.75	1.80	.90	.10	.34	5/16-18	Black
LF 8060	300	3.38	3.95	4.75	1.80	.90	.10	.34	5/16-18	Black
LF 10045	150	4	4.90	5.83	2.25	.90	.12	.39	3/8-16	Black
LF 10060	300	4	4.90	5.83	2.25	.90	.12	.39	3/8-16	Black
LF 15060	700	5.90	7.16	8.45	3	1.40	.16	.47	1/2-13	Black
LF 20045	1100	7.90	9.45	11	4.95	1.57	.20	.56	3/4-10	Black
LF 20060	1800	7.90	9.45	11	4.95	1.57	.20	.56	3/4-10	Black

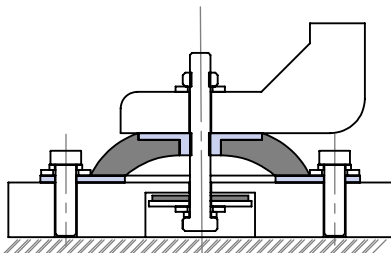
COMPRESSION MOUNTS



Typical Installation:



Option 1 - Standard LF mount.



Option 2 - To prevent mounts from vertical (up) tensions loads we recommend snubbing stop washer installation.

