

## 1/2" & 1" DEFLECTION SEISMIC RESTRAINED SPRING MOUNTS

SRMT-020/120/100 mounts are designed to provide efficient isolation from critical vibrations and all-directional restraint from vertical and horizontal forces, as well as from forces due to seismic activities and high wind loads.

### Recommended for:

HVAC equipment, fan air circulation systems, compressors, pumps, chillers, AC units, cooling towers, inertia bases, etc.



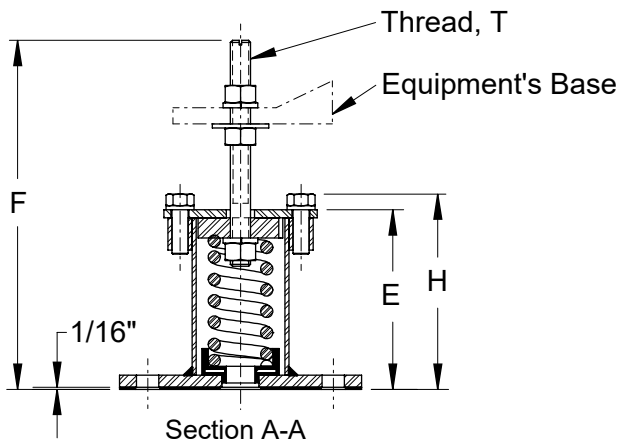
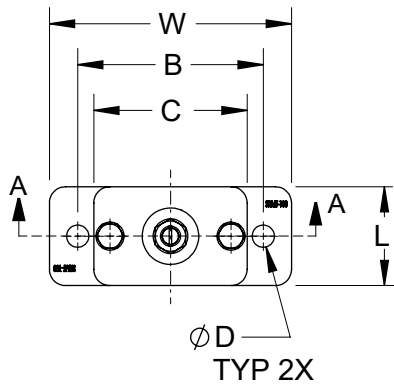
SRMT-100



SRMT-120



SRMT-20



Dimensions in inches, (in)	SRMT-20	SRMT-120	SRMT-100
W	4-1/2	6-1/2	7-1/2
L	2	3-1/16	3-1/16
B	3-1/2	5	5-3/4
C	3-1/4	4-1/2	4-3/4
D	7/16	9/16	11/16
H	2-3/4	4-7/16	6-1/16
E	2-7/16	4-1/16	5-9/16
F	5-1/2	8-5/16	10-13/16
T	3/8-16 UNC	1/2-13 UNC	5/8-11 UNC

### Features:

- ✓ All springs at rated loads have 50% additional travel to solid load.
- ✓ All mounts' elements are safe at solid load.
- ✓ Safety Factor - Springs will accommodate 50% extra load from rated load to solid load.
- ✓ Recommended load range: from 50% of rated load to rated load.
- ✓ Zinc plates housings and springs provide good corrosion resistance.
- ✓ Elastomer spring base cap provides better vibration isolation, load distribution and noise reduction.
- ✓ Springs are color coded and easily replaceable.
- ✓ Rugged welded steel housing designed to withstand seismic and high wind forces.
- ✓ Anti-skid rubber acoustical pad.

## 1/2" DEFLECTION SEISMIC RESTRAINED SPRING MOUNTS

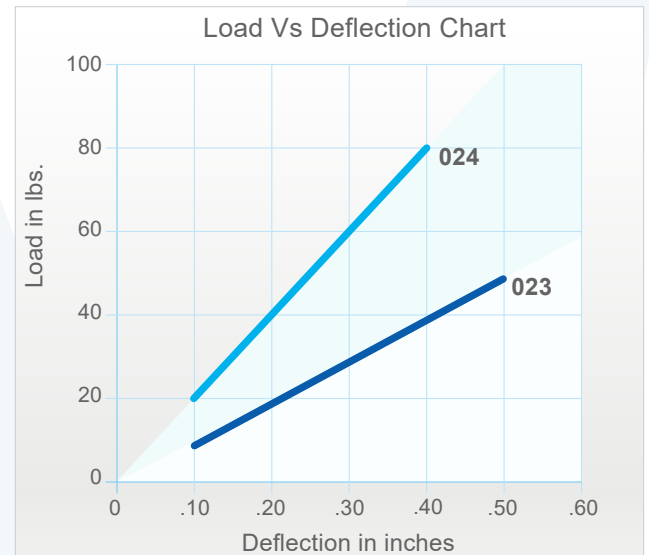
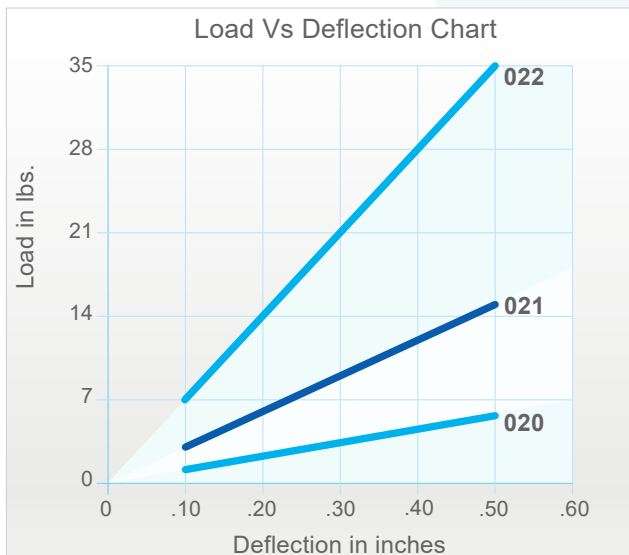
Model	Rated Load (lbs)	Deflection at Rated Load (lin)	Spring Rate (lbs/in)	Max. Vertical G Rating	Max. Horiz. G Rating	Spring Color
SRMT-020	5	.50	10	100	65	Black
SRMT-021	15	.50	30	33	21	Blue
SRMT-022	35	.50	70	14	9	Red
SRMT-023	50	.50	100	10	6.5	Yellow
SRMT-024	80	.40	200	6	4	White
SRMT-025	130	.40	325	1.5	1	Green

The load capacities are LRFD (Load and Resistance Factor Design) load level prescribed in American Society of Civil Engineers ASCE 7-10 and listed in the table.

### SRMT-020

Max. Horizontal: 325 lbs

Max. Vertical: 500 lbs



### Notes:

- a) 020 Spring: 1.25" Outside diameter x 1.50" Free Length.
- b) Rated load is the maximum load recommended.

## 1" DEFLECTION SEISMIC RESTRAINED SPRING MOUNTS

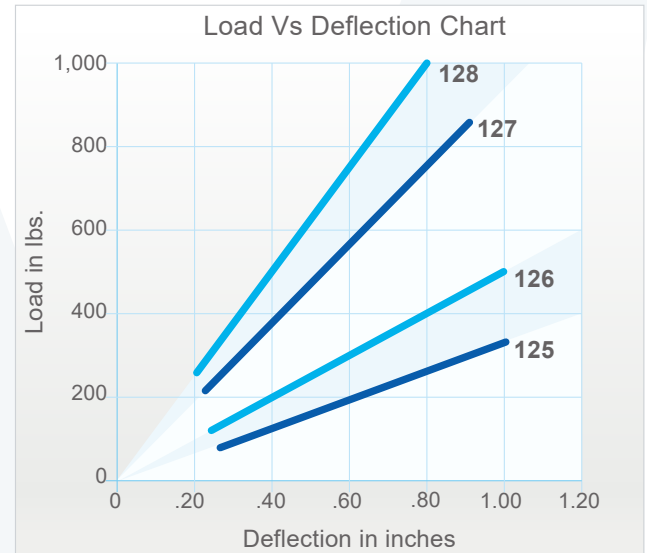
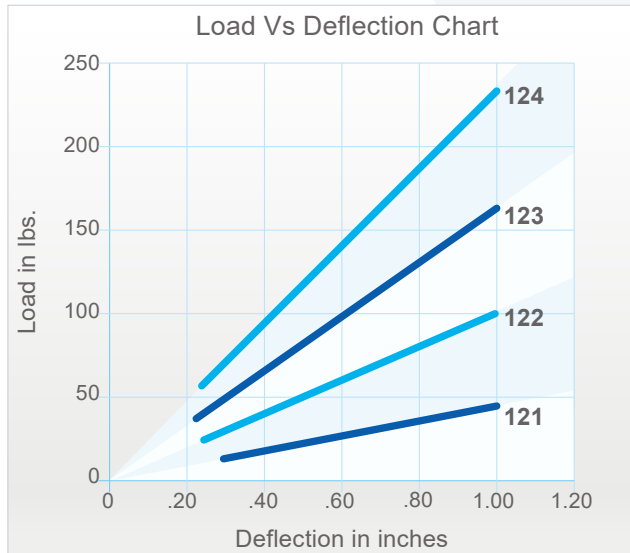
Model	Rated Load (lbs)	Deflection at Rated Load (lin)	Spring Rate (lbs/in)	Max. Vertical G Rating	Max. Horiz. G Rating	Spring Color
SRMT-121	45	1	45	22	17	Grey
SRMT-122	100	1	100	10	8	Black
SRMT-123	165	1	165	6	4.8	Pink
SRMT-124	235	1	235	4.2	3.4	Blue
SRMT-125	335	1	335	3	2.3	Red
SRMT-126	500	1	500	2	1.6	Brown
SRMT-127	850	.89	950	1.2	0.9	Yellow
SRMT-128	1,000	.80	1,250	1	0.8	Green

The load capacities are LRFD (Load and Resistance Factor Design) load level prescribed in American Society of Civil Engineers ASCE 7-10 and listed in the table.

### SRMT-120

Max. Horizontal: 800 lbs

Max. Vertical: 1,000 lbs

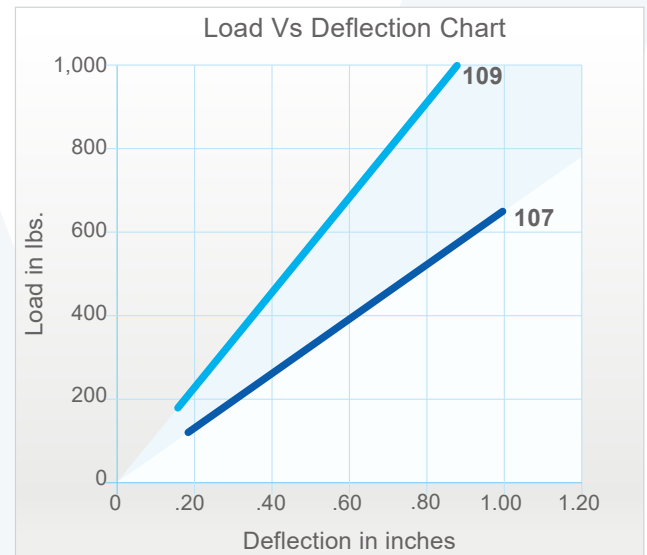
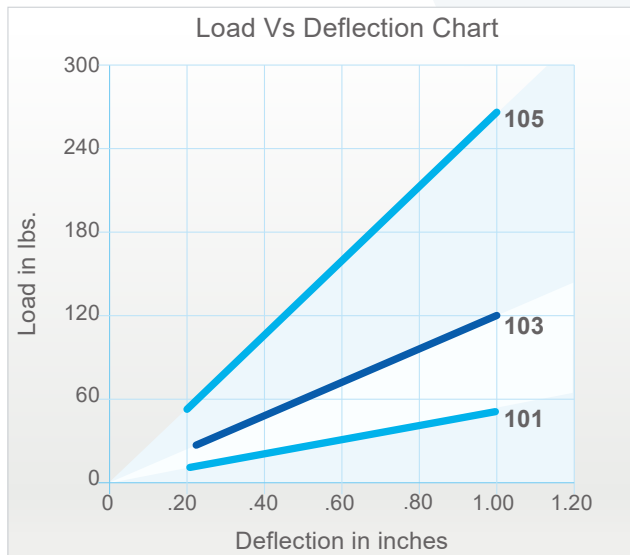


### Notes:

- a) 120 Spring: 2" Outside diameter x 3" Free Length.
- b) Rated load is the maximum load recommended.

## 1" DEFLECTION SEISMIC RESTRAINED SPRING MOUNTS

Model	Rated Load (lbs)	Deflection at Rated Load (lin)	Spring Rate (lbs/in)	Spring Color
SRMT-101	50	1	50	Blue
SRMT-103	120	1	120	Brown
SRMT-105	270	1	270	Yellow
SRMT-107	650	1	650	Green
SRMT-109	1,000	.84	1,190	White



### Notes:

- a) 100 Spring: 2" Outside diameter x 4" Free Length.
- b) Rated load is the maximum load recommended.