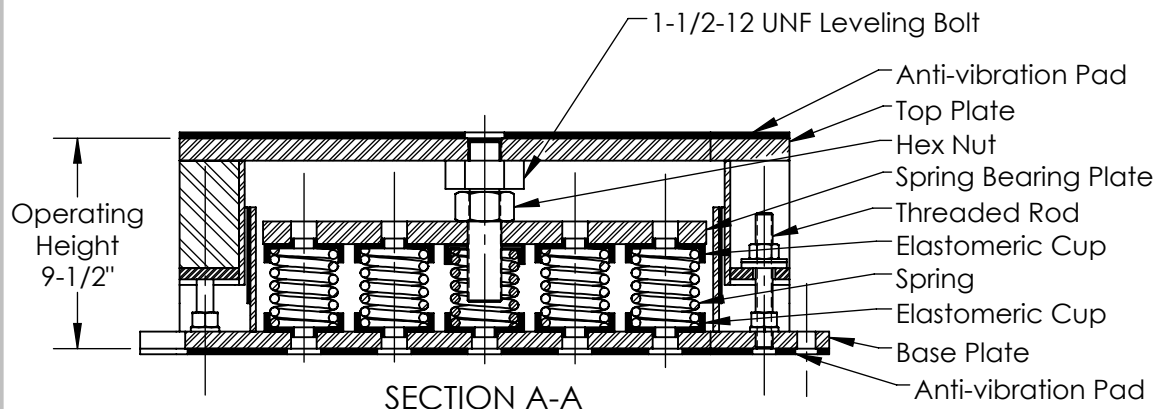
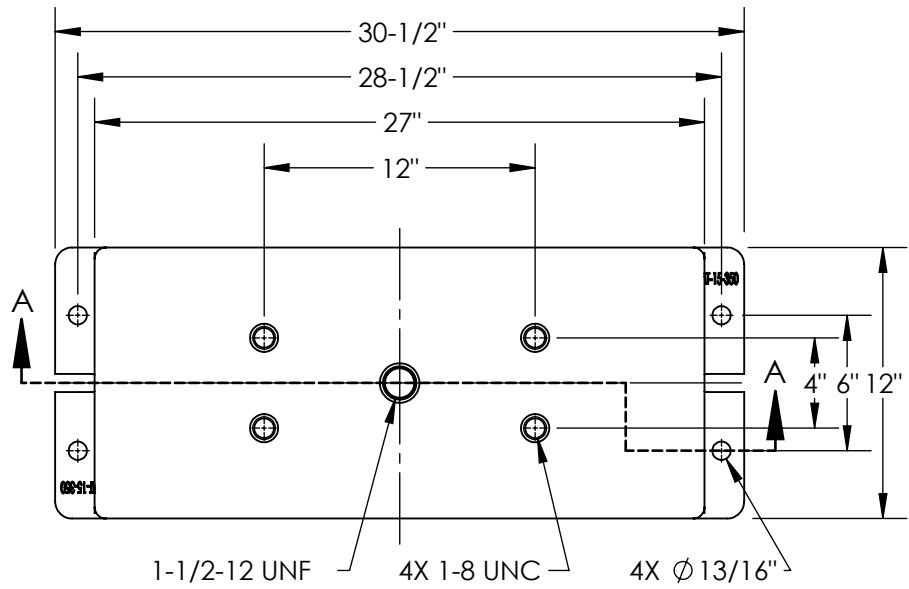


2

1

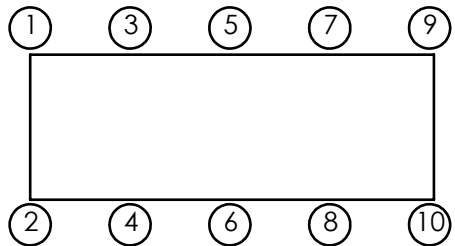
B

B



A

A



| Isolator Selections | | | |
|---------------------|--|--------|--|
| Pos 1 | | Pos 2 | |
| Pos 3 | | Pos 4 | |
| Pos 5 | | Pos 6 | |
| Pos 7 | | Pos 8 | |
| Pos 9 | | Pos 10 | |

| Model | Rated Load (lbs) | Deflec. @ Rated Load (in) | Spring Rate (lbs/in) | Spring Color |
|-----------------|------------------|---------------------------|----------------------|---------------|
| SRMF-15-352 | 2,100 | 1.5 | 1,400 | Yellow |
| SRMF-15-354 | 3,750 | 1.5 | 2,500 | Purple |
| SRMF-15-354-142 | 5,775 | 1.5 | 3,850 | Purple/Blue |
| SRMF-15-354-144 | 9,750 | 1.5 | 6,500 | Purple/Brown |
| SRMF-15-354-146 | 15,000 | 1.5 | 10,000 | Purple/Yellow |
| SRMF-15-354-148 | 19,500 | 1.25 | 15,600 | Purple/Green |

| Model | Rated Load (lbs) | Deflec. @ Rated Load (in) | Spring Rate (lbs/in) | Spring Color |
|-----------------|------------------|---------------------------|----------------------|--------------|
| SRMF-15-350 | 1,200 | 2 | 600 | Red |
| SRMF-15-350-140 | 2,400 | 2 | 1,200 | Red/Black |
| SRMF-15-403 | 5,220 | 2 | 2,610 | Black |
| SRMF-15-404 | 6,795 | 2 | 3,398 | Blue |
| SRMF-15-405 | 8,850 | 2 | 4,425 | Red |
| SRMF-15-406 | 10,140 | 2 | 5,070 | Orange |
| SRMF-15-407 | 11,805 | 2 | 5,903 | Green |
| SRMF-15-408 | 13,770 | 2 | 6,885 | White |
| SRMF-15-409 | 15,000 | 2 | 7,500 | Brown |
| SRMF-15-410 | 18,750 | 2 | 9,375 | White |
| SRMF-15-407-150 | 21,555 | 2 | 10,778 | Green/Grey |
| SRMF-15-409-150 | 24,750 | 2 | 12,375 | Brown/Grey |
| SRMF-15-410-150 | 28,500 | 2 | 14,250 | White/Grey |

Notes:

- Standard finish: Housing - Zinc Bright Plating; Spring - Zinc Bright Plating (Color: see table); Hardware - Zinc-electroplate.
- Safety factor - All Springs will accommodate 50% extra load from rated load to solid load.

VibraSystems Inc

www.vibrasystems.com
email: info@vibrasystems.com

INSTALLATION INSTRUCTIONS

| | | | |
|-------------|--------------------|--------------|-------|
| SCALE: None | MODEL: SRMF-15-350 | SHEET 1 OF 2 | REV A |
|-------------|--------------------|--------------|-------|

2

1

