

SEISMIC RESTRAINED CERTIFIED SPRING MOUNTS

2" and 3" spring deflection models **SRMT-2** (top levelling bolt) and models **SRMF-2** (flat top with built-in levelling feature) are heavy-duty Seismic Restrained Certified Spring Mounts - Snubbers Combination. The uniquely innovative design incorporates interlocking top and bottom steel channels, which restrict the movement (snubbers effect) in all horizontal directions under lateral forces. Rubber lining inside bottom metal channels prevents metal-to-metal contact. **Vibrasystems Inc. isolators are tested and certified to ASHRAE 171-2017 for wind and seismic load resistance.**

Recommended for:

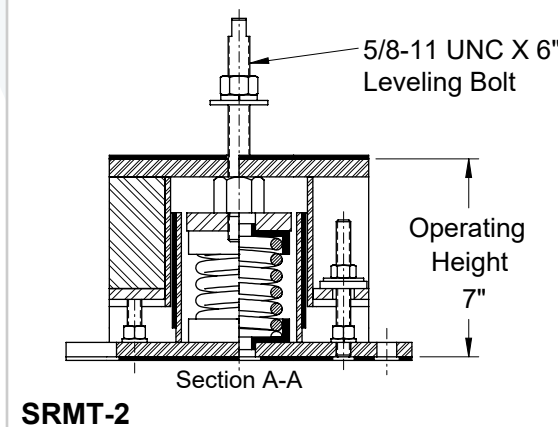
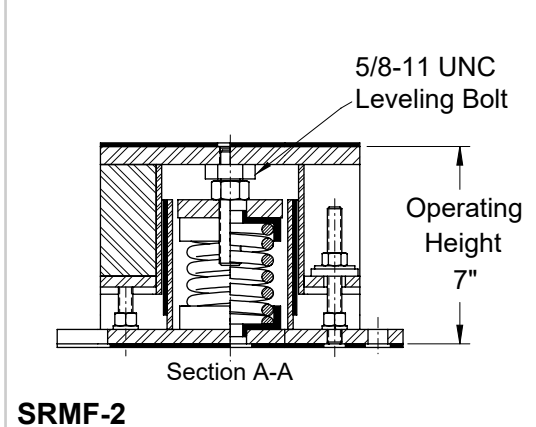
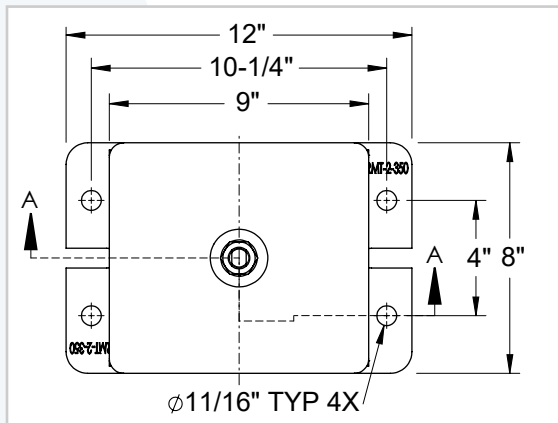
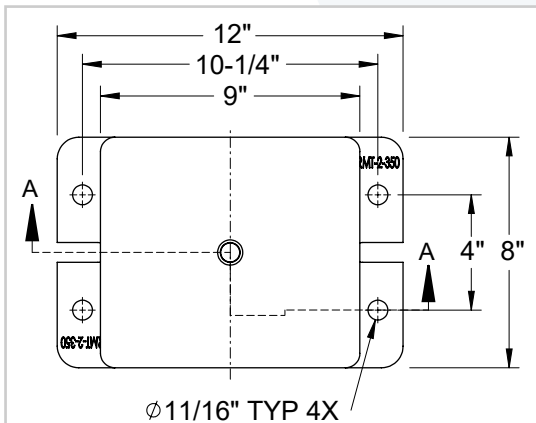
HVAC equipment, fan air circulation systems, compressors, pumps, chillers, AC units, cooling towers, inertia bases, etc.



SRMF-2



SRMT-2



Features:

- ✓ Safety Factor - Springs will accommodate 50% extra load from rated load to solid load.
- ✓ All mounts' elements are safe at solid load.
- ✓ Interlocking steel channels restrict the movements (snubbers) in all horizontal directions.
- ✓ Rubber lining inside bottom metal channels prevents metal-to-metal contact.
- ✓ Zinc plates housings and springs provide good corrosion resistance.
- ✓ Elastomer spring base cap provides better vibration isolation, load distribution and noise reduction.
- ✓ Springs are color coded and easily replaceable.
- ✓ Now tested and certified to: **ASHRAE 171-2017 for wind and seismic load resistance.**

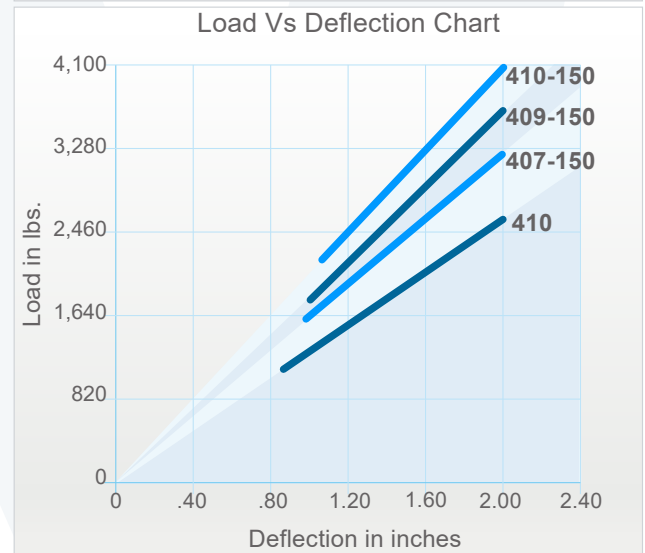
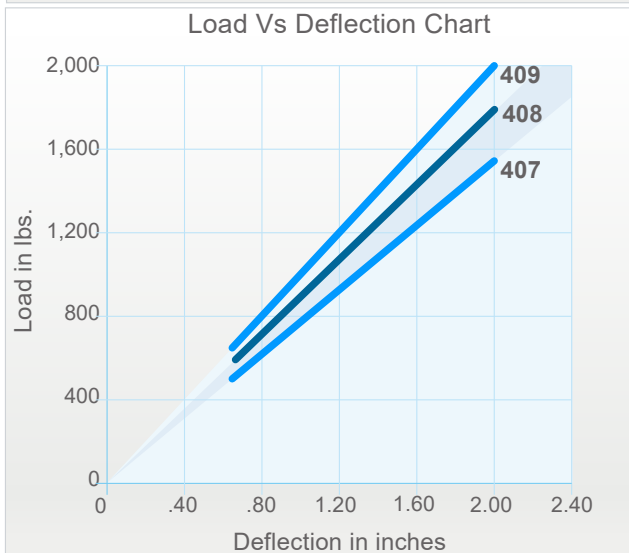
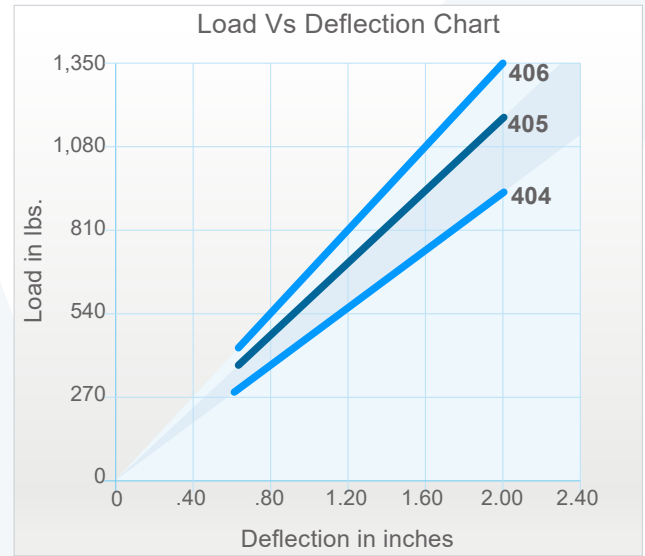
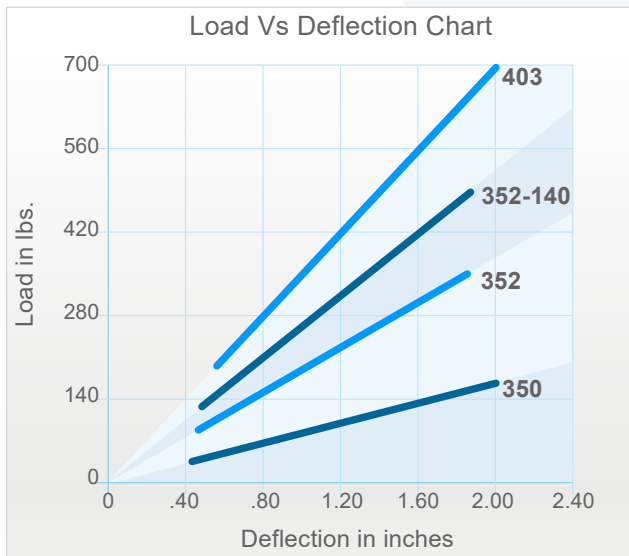
Tested & Certified to:
ANSI/ASHRAE 171-2017

Wind & Seismic Maximum Vertical Load Resistance: 17,690 lbs
Wind & Seismic Maximum Horizontal Load Resistance: 5,940 lbs

2" DEFLECTION SEISMIC RESTRAINED CERTIFIED SPRING MOUNTS

Model	Rated Load (lbs)	Deflection at Rated Load (lin)	Spring Rate (lbs/in)	Spring Color
SRM-2-350	160	2	80	Red
SRM-2-352	360	1.8	200	Plated
SRM-2-352-140	500	1.8	250	Plated/Black
SRM-2-403	696	2	348	Black
SRM-2-404	906	2	453	Blue
SRM-2-405	1,180	2	590	Red
SRM-2-406	1,352	2	676	Orange
SRM-2-407	1,574	2	787	Green
SRM-2-408	1,836	2	918	White
SRM-2-409	2,000	2	1,000	Brown
SRM-2-410	2,500	2	1,250	White
SRM-2-407-150	3,174	2	1,587	Green/Grey
SRM-2-409-150	3,600	2	1,800	Brown/Grey
SRM2-410-150	4,100	2	2,050	White/Grey

Models are available in two configurations: SRMF-2, and SRMT-2.

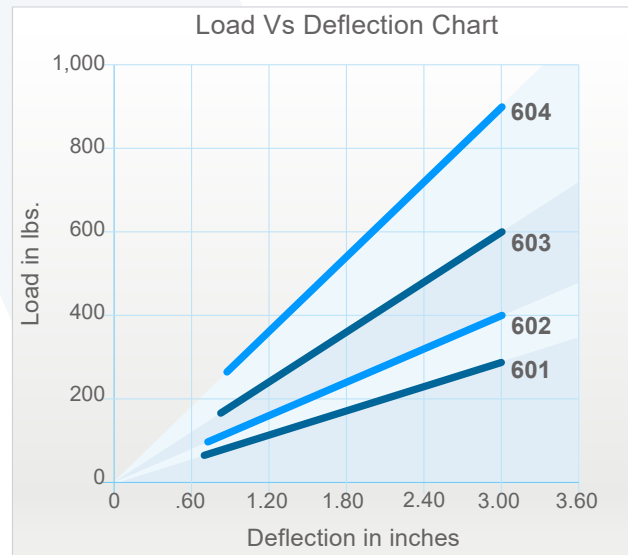


3" DEFLECTION SEISMIC RESTRAINED CERTIFIED SPRING MOUNTS

Model	Rated Load (lbs)	Deflection at Rated Load (lin)	Spring Rate (lbs/in)	Spring Color
SRM-2-601	280	3	93	Blue
SRM-2-602	400	3	133	Yellow
SRM-2-603	600	3	200	Orange
SRM-2-604	900	3	300	Red

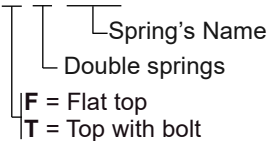
Models are available in two configurations: SRMF-2, and SRMT-2.

Tested & Certified to: ANSI/ASHRAE 171-2017	Wind & Seismic Maximum Vertical Load Resistance: 17,690 lbs
	Wind & Seismic Maximum Horizontal Load Resistance: 5,940 lbs



Model nomenclature:

SRMT-2-410



Notes:

- Vibrasystems isolators are tested and certified to ASHRAE 171-2017 for wind and seismic load resistance. Wind and Seismic Certification Compliance Report 1701502-CR-001-R1 is available upon request.
- 350 Spring: 3" Outside diameter x 5" Free Length.
- 140 Spring & 170 Spring: 2" Outside diameter x 5" Free Length.
- 400 Spring: 3" Outside diameter x 5.75" Free Length.
- 150 Spring: 2" Outside diameter x 5.75" Free Length.
- 600 Spring: 3" Outside diameter x 6.75" Free Length
- Rated load is the maximum load recommended.
- Housing frame can supplied zinc plated or powder coated (blue color).