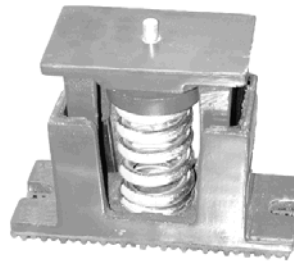


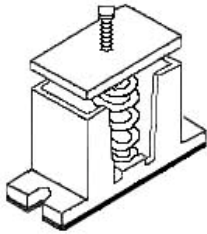


## Type "A-1-100" Series SPRING MOUNTS

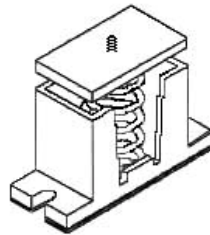
Type "A" series mounts with two inch deflection provides a solution to critical vibration problems. These mounts are preferred over the one inch deflection mounts and most rubber mounts due to their higher static deflection. These mounts are normally recommended to building structures and negligible vibration transmission to the building is required. "A" type spring mounts with two inch deflection are designed for noise and vibration free application in critical areas on concrete or wooded floors.



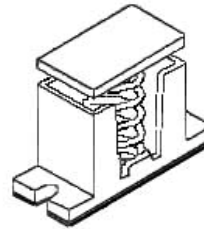
**Model 'AA-1'**  
External Adjustment



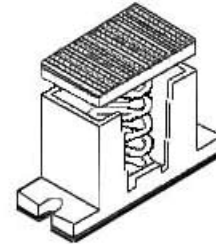
**Model 'AB-1'**  
Internal Adjustment - Pin Top



**Model 'AC-1'**  
Internal Adjustment - Flat Top

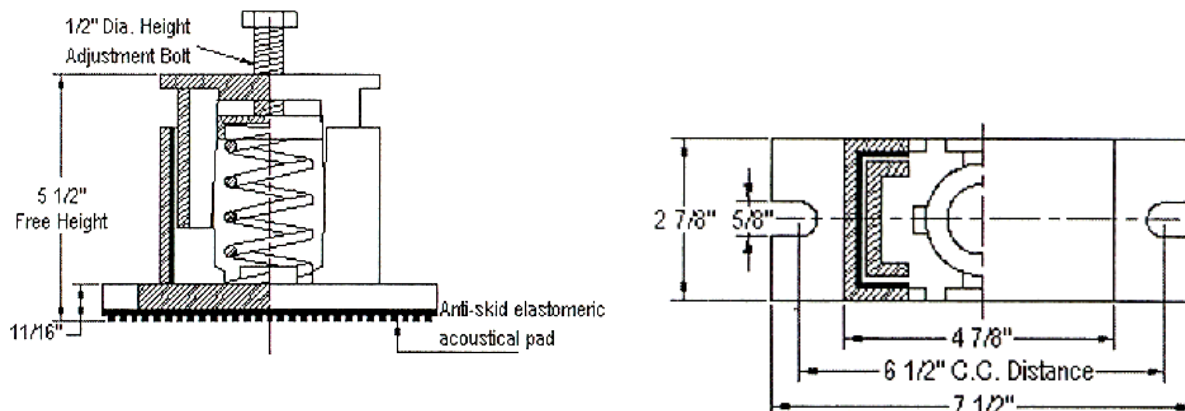


**Model 'AD-1'**  
Internal Adjustment - Neoprene Top



### FEATURES:

Two or Three piece cast iron housing to house spring. Mounts are provided with slotted mounting holes and a non skid elastomeric acoustic pad on the base for bolting to floor. Resilient elastomeric snubbers on inner panel to prevent metal to metal contact and allow spring to function properly. These mounts have a built in leveling device (external or internal). Spring elements are galvanized for long life without rusting problems and are color coded for easy field identification. Springs have 50% additional travel to solid beyond rated load as per the **ASHRAE** recommendations. These spring mounts can also be supplied with flat top or non skid neoprene top in case of internal level adjustment.





**NOTE:**

- 1) adjust mounting so that upper housing clears lower housing by at least 1/4" but not more than 1/2".
- 2) isolators should be selected in the range of -30% to +25% of rated load.

MODEL	DIMENSION IN INCHES						
	E	F	G	H	I	J	K
<b>AA-1</b> (EXTERNAL ADJUSTMENT)	7 1/2	6 1/2	4 7/8	2 7/8	5/8	5 1/2	11 1/16
<b>AB-1</b> (INTERNAL ADJUSTMENT - PIN TOP)	7 1/2	6 1/2	4 7/8	2 7/8	5/8	5 7/8	11 1/16
<b>AC-1</b> (INTERNAL ADJUSTMENT - FLAT TOP)	7 1/2	6 1/2	4 7/8	2 7/8	5/8	5 7/8	11 1/16
<b>AD-1</b> (INTERNAL ADJUSTMENT - NEOPRENE TOP)	7 1/2	6 1/2	4 7/8	2 7/8	5/8	6 1/8	11 1/16

**X = (Model Types A,B,C,or D see above)**

ISOLATOR MODEL	RATED LOAD (LBS)	SOLID LOAD (LBS.)	DEFLECTION AT SOLID LOAD (INCH)	COLOR	
				MAIN	STRIPE
Ax-1-101	56	85	1.4	Silver	Pink
Ax-1-102	76	115	1.3	Silver	Black
Ax-1-103	113	170	1.3	Silver	Blue
Ax-1-104	150	225	1.3	Silver	Yellow
Ax-1-105	216	325	1.2	Silver	Brown
Ax-1-106	300	450	1.2	Silver	Red
Ax-1-107	400	600	1.2	Silver	Purple
Ax-1-108	500	750	1.1	Silver	Orange
Ax-1-109	600	900	1.0	Silver	Green
Ax-1-110	733	1100	0.8	Silver	Gray
Ax-1-111	866	1300	0.8	Silver	White
Ax-1-112	1000	1500	1.0	Silver	Gold
Ax-1-101-113	507	761	1.0	Silver/Silver	Pink/NIL
Ax-1-102-113	526	789	1.0	Silver/Silver	Black/NIL
Ax-1-103-113	554	831	1.0	Silver/Silver	Blue/NIL
Ax-1-104-113	582	874	1.0	Silver/Silver	Yellow/NIL
Ax-1-105-113	647	971	1.0	Silver/Silver	Brown/NIL
Ax-1-106-113	716	1075	1.0	Silver/Silver	Red/NIL
Ax-1-107-113	800	1200	1.0	Silver/Silver	Purple/NIL
Ax-1-108-113	921	1382	1.0	Silver/Silver	Orange/NIL
Ax-1-109-113	1066	1600	1.0	Silver/Silver	Green/NIL
Ax-1-110-113	1106	1660	0.8	Silver/Silver	Gray/NIL
Ax-1-111-113	1240	1860	0.8	Silver/Silver	White/NIL
Ax-1-112-113	1466	2200	1.0	Silver/Silver	Gold/NIL