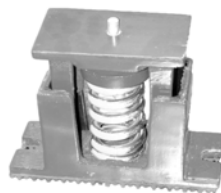


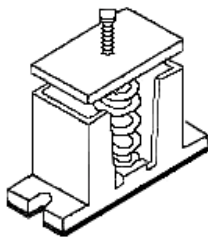


Type "A-1-140" Series SPRING MOUNTS

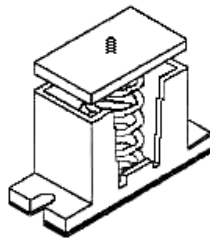
Type "A" series mounts with two inch deflection provides a solution to critical vibration problems. These mounts are preferred over the one inch deflection mounts and most rubber mounts due to their higher static deflection. These mounts are normally recommended to building structures and negligible vibration transmission to the building is required. "A" type spring mounts with two inch deflection are designed for noise and vibration free application in critical areas on concrete or wooded floors.



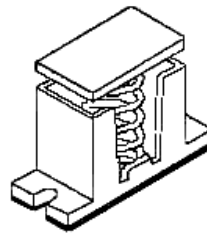
Model 'AA-1'
External Adjustment



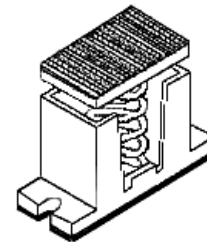
Model 'AB-1'
Internal Adjustment - Pin Top



Model 'AC-1'
Internal Adjustment - Flat Top

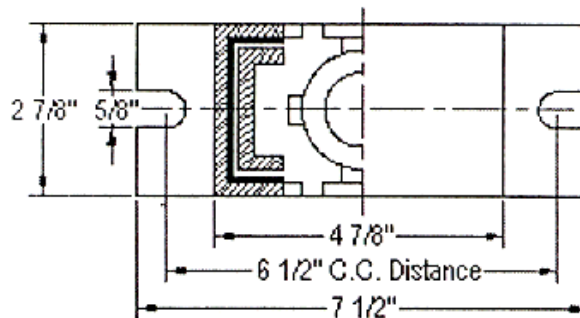
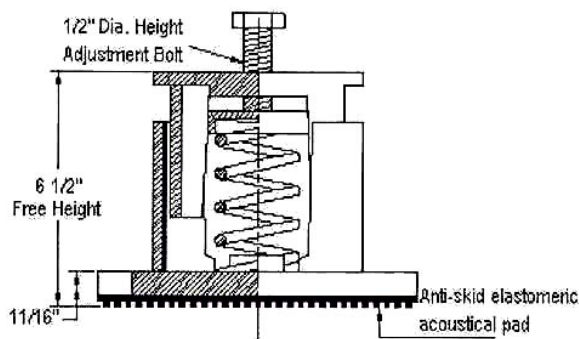


Model 'AD-1'
Internal Adjustment - Neoprene Top



FEATURES:

Two or Three piece cast iron housing to house spring. Mounts are provided with slotted mounting holes and a non skid elastomeric acoustic pad on the base for bolting to floor. Resilient elastomeric snubbers on inner panel to prevent metal to metal contact and allow spring to function properly. These mounts have a built in leveling device (external or internal). Spring elements are galvanized for long life without rusting problems and are color coded for easy field identification. Springs have 50% additional travel to solid beyond rated load as per the **ASHRAE** recommendations. These spring mounts can also be supplied with flat top or non skid neoprene top in case of internal level adjustment.





APPLICATIONS:

For all air conditioning equipments, compressors, air handling units, centrifugal fans, pumps, chillers and other similar application.

NOTE:

- 1) Adjust mounting so that upper housing clears lower housing by at least 1/4" but not more than 1/2".
- 2) Isolators should be selected in the range of -30% to +25% of rated load.

MODEL	DIMENSION IN INCHES						
	E	F	G	H	I	J	K
AA-1 (EXTERNAL ADJUSTMENT)	7 1/2	6 1/2	4 7/8	2 7/8	5/8	6 1/2	11 1/16
AB-1 (INTERNAL ADJUSTMENT - PIN TOP)	7 1/2	6 1/2	4 7/8	2 7/8	5/8	6 7/8	11 1/16
AC-1 (INTERNAL ADJUSTMENT - FLAT TOP)	7 1/2	6 1/2	4 7/8	2 7/8	5/8	6 7/8	11 1/16
AD-1 (INTERNAL ADJUSTMENT - NEOPRENE TOP)	7 1/2	6 1/2	4 7/8	2 7/8	5/8	7 1/8	11 1/16

X = (Model Types A,B,C,or D see above)

ISOLATOR MODEL	RATED LOAD (LBS)	SOLID LOAD (LBS.)	DEFLECTION AT SOLID LOAD (INCH)	COLOR	
				MAIN	STRIPE
Ax-1-140	66	100	2.25	Silver	Blue
Ax-1-141	133	200	2.25	Silver	Black
Ax-1-142	250	375	2.0	Silver	Red
Ax-1-143	333	500	2.0	Silver	Green
Ax-1-144	476	714	2.0	Silver	Gray
Ax-1-147	953	1430	2.0	Silver	White
Ax-1-148A	1261	1892	2.0	Silver	Yellow
Ax-1-140-146B	460	690	2.0	Silver/Silver	Blue/White
Ax-1-141-146B	518	778	2.0	Silver/Silver	Black/White
Ax-1-142-146B	650	976	2.0	Silver/Silver	Red/White
Ax-1-143-146B	733	1100	2.0	Silver/Silver	Green/White
Ax-1-144-146B	876	1314	2.0	Silver/Silver	Gray/White
Ax-1-147-146B	1353	2030	2.0	Silver/Silver	White/White
Ax-1-148A-146B	1661	2492	2.0	Silver/Silver	Yellow/White