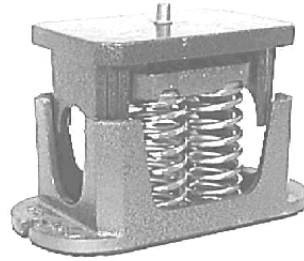


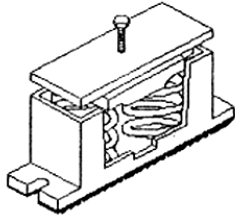


## Type "A-2-100" Series SPRING MOUNTS

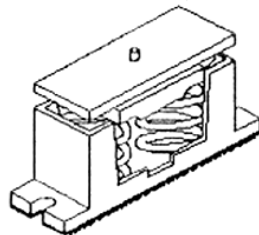
Type "A" series mounts with two inch deflection provides a solution to critical vibration problems. These mounts are preferred over the one inch deflection mounts and most rubber mounts due to higher static deflection. These mounts are normally recommended for building structures where negligible vibration transmission to the building is required. "A" type spring mounts with two inch deflection are designed for noise and vibration free application in critical areas on concrete or wooded floors.



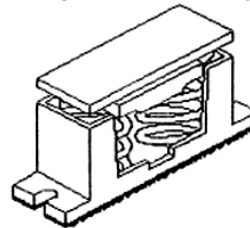
Model 'AA-2'  
External Adjustment



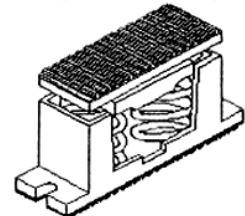
Model 'AB-2'  
Internal Adjustment - pin top



Model 'AC-2'  
Internal Adjustment - flat top

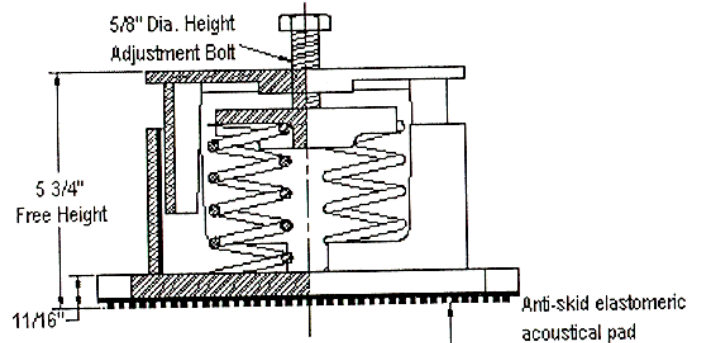
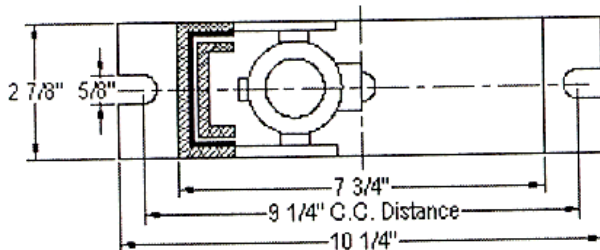


Model 'AD-2'  
Internal Adjustment - neoprene top



### FEATURES:

Two or Three piece cast iron housing to house the spring. Mounts are provided with slotted mounting holes on base for bolting to floor with non skid elastomeric acoustic pad. Resilient elastomeric rubbers on inner housing to prevent metal to metal contact and allow spring to function properly. These Mounts have a built in leveling device (external or internal). Spring elements are galvanized for long life without any rusting problems and are color coded for easy field identification. Springs have 50% additional travel to solid beyond rated load as per the **ASHRAE** recommendations. These spring mounts can also be supplied with flat top or non skid neoprene top load surface in case of internal level adjustment



**APPLICATION:**

For all air conditioning equipments, compressors, air handling units, centrifugal fans, pumps, chillers and other similar application.

**NOTE:**

- 1) Adjust mounting so that upper housing clears lower housing by at least 1/4" but not more than 1/2".
- 2) Isolators should be selected in the range of -30% to +25% of rated load.

MODEL	DIMENSION IN INCHES						
	E	F	G	H	I	J	K
<b>AA-2</b> (EXTERNAL ADJUSTMENT)	10 1/4	9 1/4	7 3/4	2 7/8	5/8	5 3/4	11 1/16
<b>AB-2</b> (INTERNAL ADJUSTMENT - PIN TOP)	10 1/4	9 1/4	7 3/4	2 7/8	5/8	5 7/8	11 1/16
<b>AC-2</b> (INTERNAL ADJUSTMENT - FLAT TOP)	10 1/4	9 1/4	7 3/4	2 7/8	5/8	5 7/8	11 1/16
<b>AD-2</b> (INTERNAL ADJUSTMENT - NEOPRENE TOP)	10 1/4	9 1/4	7 3/4	2 7/8	5/8	6 1/8	11 1/16

**X= (Model Types A, B, C, D see above)**

ISOLATOR MODEL	RATED LOAD (LBS)	SOLID LOAD (LBS.)	DEFLECTION AT SOLID LOAD (INCH)	COLOR	
				MAIN	STRIPE
Ax-2-101	112	170	1.4	Silver	Pink
Ax-2-102	152	230	1.3	Silver	Black
Ax-2-103	226	340	1.3	Silver	Blue
Ax-2-104	300	450	1.3	Silver	Yellow
Ax-2-105	432	650	1.2	Silver	Brown
Ax-2-106	600	900	1.2	Silver	Red
Ax-2-107	800	1200	1.2	Silver	Purple
Ax-2-108	1000	1500	1.1	Silver	Orange
Ax-2-109	1200	1800	1.0	Silver	Green
Ax-2-110	1466	2200	0.8	Silver	Gray
Ax-2-111	1732	2600	0.8	Silver	White
Ax-2-112	2000	3000	1.0	Silver	Gold
Ax-2-101-113	1014	1522	1.0	Silver/Silver	Pink/NIL
Ax-2-102-113	1056	1578	1.0	Silver/Silver	Black/NIL
Ax-2-103-113	1108	1662	1.0	Silver/Silver	Blue/NIL
Ax-2-104-113	1164	1748	1.0	Silver/Silver	Yellow/NIL
Ax-2-105-113	1294	1942	1.0	Silver/Silver	Brown/NIL
Ax-2-106-113	1432	2150	1.0	Silver/Silver	Red/NIL
Ax-2-107-113	1600	2400	1.0	Silver/Silver	Purple/NIL
Ax-2-108-113	1842	2764	1.0	Silver/Silver	Orange/NIL
Ax-2-109-113	2132	3200	1.0	Silver/Silver	Green/NIL
Ax-2-110-113	2212	3320	0.8	Silver/Silver	Gray/NIL
Ax-2-111-113	2480	3720	0.8	Silver/Silver	White/NIL
Ax-2-112-113	2932	4400	1.0	Sliver/Silver	Gold/NIL