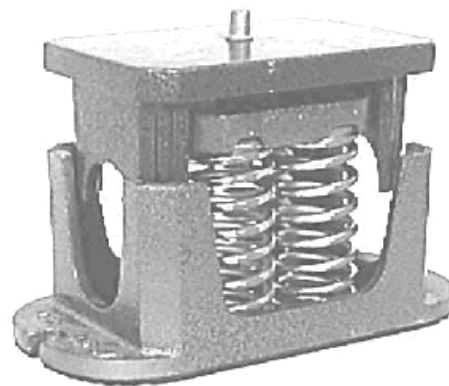




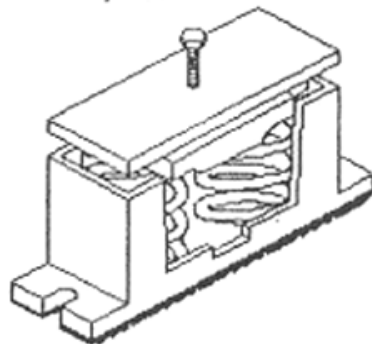
Type "A-2-140" Series SPRING MOUNTS

Type "A" series mounts with two inch deflection provides a solution to critical vibration problems. These mounts are preferred over the one inch deflection mounts and most rubber mounts due to higher static deflection. These mounts are normally recommended for building structures where negligible vibration transmission to the building is required. "A" type spring mounts with two inch deflection are designed for noise and vibration free application in critical areas on concrete or wooded floors.



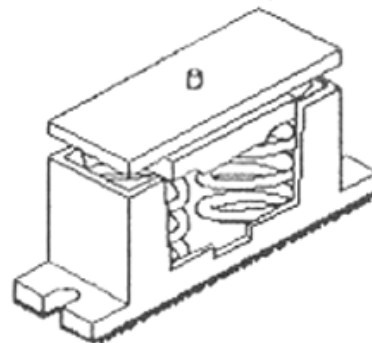
Model 'AA-2'

External Adjustment



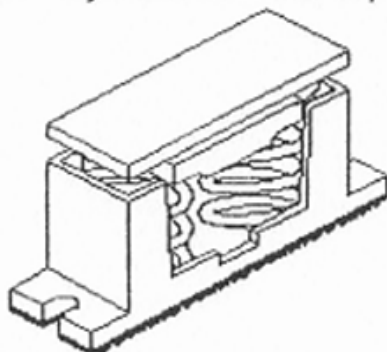
Model 'AB-2'

Internal Adjustment - pin top



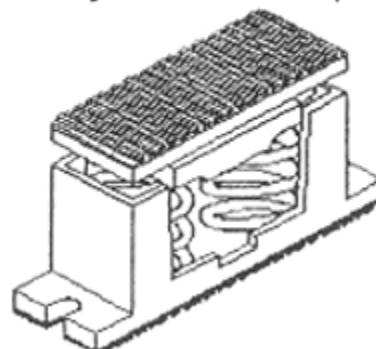
Model 'AC-2'

Internal Adjustment - flat top



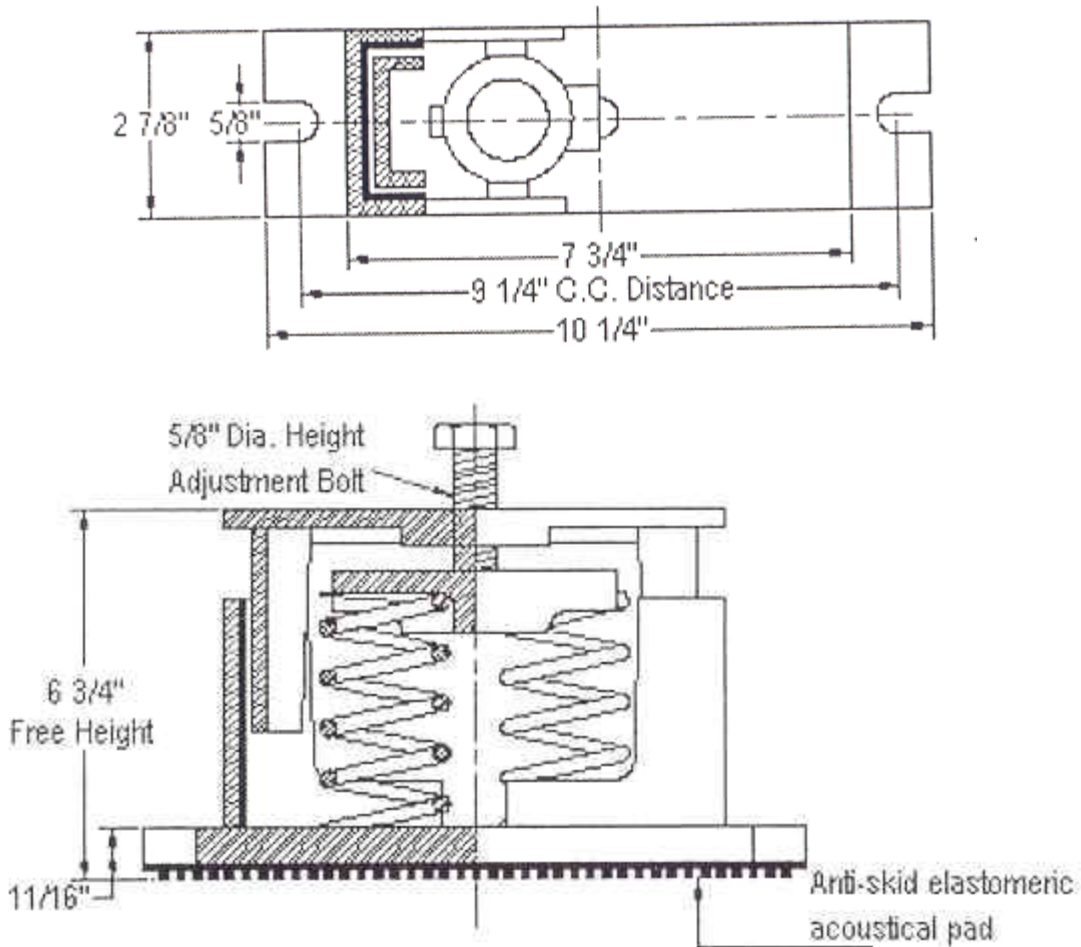
Model 'AD-2'

Internal Adjustment - neoprene top



FEATURES:

Two or Three piece cast iron housing to house the spring. Mounts are provided with slotted mounting holes on base for bolting to floor with non skid elastomeric acoustic pad. Resilient elastomeric rubbers on inner housing to prevent metal to metal contact and allow spring to function properly. These Mounts have a built in leveling device (external or internal). Spring elements are galvanized for long life without any rusting problems and are color coded for easy field identification. Springs have 50% additional travel to solid beyond rated load as per the **ASHRAE** recommendations. These spring mounts can also be supplied with flat top or non skid neoprene top load surface in case of internal level adjustment



APPLICATION:

For all air conditioning equipments, compressors, air handling units, centrifugal fans, pumps, chillers and other similar application.

NOTE:

- 1) adjust mounting so that upper housing clears lower housing by at least 1/4" but not more than 1/2".
- 2) isolators should be selected in the range of -30% to +25% of rated load.

| MODEL | DIMENSION IN INCHES | | | | | | |
|---|---------------------|-------|-------|-------|-----|-------|-------|
| | E | F | G | H | I | J | K |
| AA-2 (EXTERNAL ADJUSTMENT) | 10 1/4 | 9 1/4 | 7 3/4 | 2 7/8 | 5/8 | 6 3/4 | 11/16 |
| AB-2 (INTERNAL ADJUSTMENT - PIN TOP) | 10 1/4 | 9 1/4 | 7 3/4 | 2 7/8 | 5/8 | 7 1/4 | 11/16 |
| AC-2 (INTERNAL ADJUSTMENT - FLAT TOP) | 10 1/4 | 9 1/4 | 7 3/4 | 2 7/8 | 5/8 | 7 1/4 | 11/16 |
| AD-2 (INTERNAL ADJUSTMENT - NEOPRENE TOP) | 10 1/4 | 9 1/4 | 7 3/4 | 2 7/8 | 5/8 | 7 1/2 | 11/16 |

X = (Model Types A,B,C,D see above)

| ISOLATOR MODEL | RATED LOAD (LBS) | SOLID LOAD (LBS.) | DEFLECTION AT SOLID LOAD (INCH) | COLOR | |
|----------------|------------------|-------------------|---------------------------------|---------------|--------------|
| | | | | MAIN | STRIPE |
| Ax-2-140 | 132 | 200 | 2.25 | Silver | Blue |
| Ax-2-141 | 266 | 400 | 2.25 | Silver | Black |
| Ax-2-142 | 500 | 750 | 2.0 | Silver | Red |
| Ax-2-143 | 666 | 1000 | 2.0 | Silver | Green |
| Ax-2-144 | 952 | 1428 | 2.0 | Silver | Gray |
| Ax-2-147 | 1906 | 2860 | 2.0 | Silver | White |
| Ax-2-148A | 2522 | 3784 | 2.0 | Silver | Yellow |
| Ax-2-140-146B | 920 | 1380 | 2.0 | Silver/Silver | Blue/White |
| Ax-2-141-146B | 1036 | 1556 | 2.0 | Silver/Silver | Black/White |
| Ax-2-142-146B | 1300 | 1952 | 2.0 | Silver/Silver | Red/White |
| Ax-2-143-146B | 1466 | 2200 | 2.0 | Silver/Silver | Green/White |
| Ax-2-144-146B | 1752 | 2628 | 2.0 | Silver/Silver | Gray/White |
| Ax-2-147-146B | 2706 | 4060 | 2.0 | Silver/Silver | White/White |
| Ax-2-148-146B | 3322 | 4984 | 2.0 | Silver/Silver | Yellow/White |