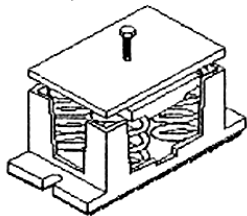




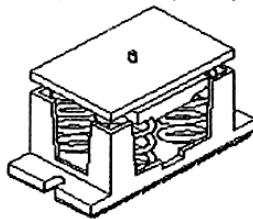
Type "A-4-100" Series SPRING MOUNTS

Type "A" series mounts with two inch deflection provides a solution to critical vibration problems. These mounts are preferred over the one inch deflection mounts and most rubber mounts due to higher static deflection. These mounts are normally recommended for building structures where negligible vibration transmission to the building is required. "A" type spring mounts with two inch deflection are designed for noise and vibration free application in critical areas on concrete or wooded floors.

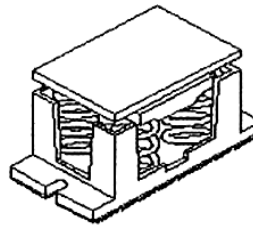
Model 'AA-4'
External Adjustment



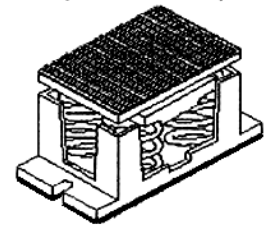
Model 'AB-4'
Internal Adjustment - pin top



Model 'AC-4'
Internal Adjustment - flat top

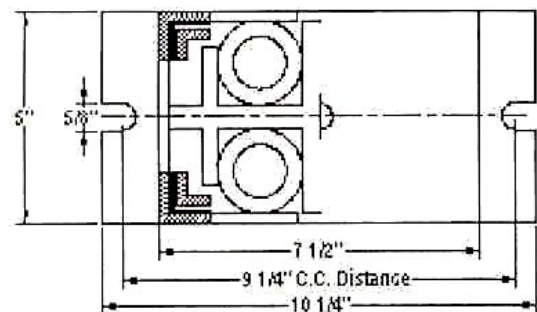
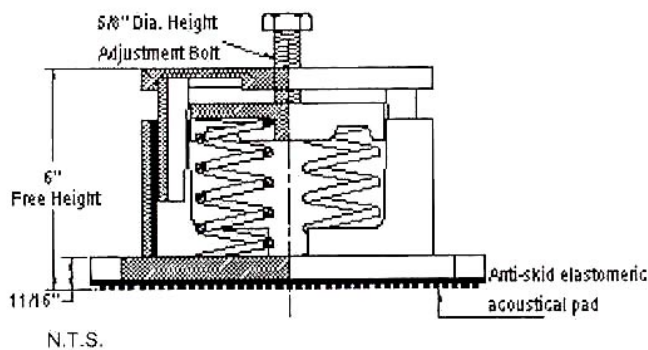


Model 'AD-4'
Internal Adjustment - neoprene top



FEATURES:

Two or Three piece cast iron housing to house the spring. Mounts are provided with slotted mounting holes on base for bolting to floor with non skid elastomeric acoustic pad. Resilient elastomeric rubbers on inner housing to prevent metal to metal contact and allow spring to function properly. These Mounts have a built in leveling device (external or internal). Spring elements are galvanized for long life without any rusting problems and are color coded for easy field identification. Springs have 50% additional travel to solid beyond rated load as per the ASHRAE recommendations. These spring mounts can also be supplied with flat top or non skid neoprene top load surface in case of internal level adjustment



APPLICATION:

For all air conditioning equipments, compressors, air handling units, centrifugal fans, pumps, chillers and other similar application.

NOTE:

- 1) Adjust mounting so that upper housing clears lower housing by at least 1/4" but not more than 1/2".
- 2) Isolators should be selected in the range of -30% to 25% of rated load.

MODEL	DIMENSION IN INCHES						
	E	F	G	H	I	J	K
AA-4 (EXTERNAL ADJUSTMENT)	10 1/4	9 1/4	7 1/2	5	5/8	6	11/16
AB-4 (INTERNAL ADJUSTMENT - PIN TOP)	10 1/4	9 1/4	7 1/2	5	5/8	5 7/8	11/16
AC-4 (INTERNAL ADJUSTMENT - FLAT TOP)	10 1/4	9 1/4	7 1/2	5	5/8	5 7/8	11/16
AD-4 (INTERNAL ADJUSTMENT - NEOPRENE TOP)	10 1/4	9 1/4	7 1/2	5	5/8	6 1/8	11/16

X = (Model Types A, B, C, D see above)

ISOLATOR MODEL	RATED LOAD (LBS)	SOLID LOAD (LBS.)	DEFLECTION AT SOLID LOAD (INCH)	COLOR	
				MAIN	STRIPE
Ax-4-101	224	340	1.4	Silver	Pink
Ax-4-102	304	460	1.3	Silver	Black
Ax-4-103	452	680	1.3	Silver	Blue
Ax-4-104	600	900	1.3	Silver	Yellow
Ax-4-105	864	1300	1.2	Silver	Brown
Ax-4-106	1200	1800	1.2	Silver	Red
Ax-4-107	1600	2400	1.2	Silver	Purple
Ax-4-108	2000	3000	1.1	Silver	Orange
Ax-4-109	2400	3600	1.0	Silver	Green
Ax-4-110	2932	4400	0.8	Silver	Gray
Ax-4-111	3464	5200	0.8	Silver	White
Ax-4-112	4000	6000	1.0	Silver	Gold
Ax-4-101-113	2028	3044	1.0	Silver/Silver	Pink/NIL
Ax-4-102-113	2112	3156	1.0	Silver/Silver	Black/NIL
Ax-4-103-113	2216	3324	1.0	Silver/Silver	Blue/NIL
Ax-4-104-113	2328	3496	1.0	Silver/Silver	Yellow/NIL
Ax-4-105-113	2588	3884	1.0	Silver/Silver	Brown/NIL
Ax-4-106-113	2864	4300	1.0	Silver/Silver	Red/NIL
Ax-4-107-113	3200	4800	1.0	Silver/Silver	Purple/NIL
Ax-4-108-113	3684	5528	1.0	Silver/Silver	Orange/NIL
Ax-4-109-113	4264	6400	1.0	Silver/Silver	Green/NIL
Ax-4-110-113	4424	6640	0.8	Silver/Silver	Gray/NIL
Ax-4-111-113	4960	7440	0.8	Silver/Silver	White/NIL
Ax-4-112-113	5864	8800	1.0	Sliver/Silver	Gold/NIL