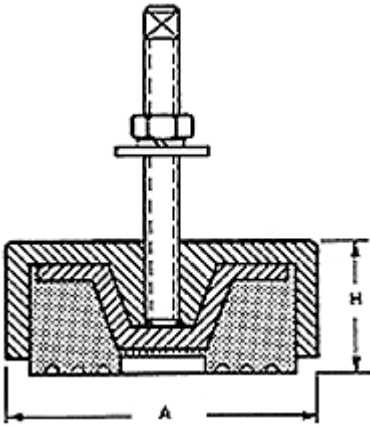




NVS Series COMPRESSION SHEAR MOUNTS



VibraSystems type **NVS** Compression Shear leveling mounts are recommended specifically for applications having both compression and shear loads. Precision fitted neoprene inserts provide maximum dampening of shock and shear forces. Type **NVS** mounts are designed for installation of almost all workshop machines such as lathes, milling machines, punch presses, printing machinery, shears, brakes, injection molding machines, grinders and similar equipment.

- Built in leveling device enables quick, easy and precise leveling of machinery.
- Concentric rings in the base of the insert firmly anchor the machine to the floor,

preventing creeping or walking.

- Isolates vertical and horizontal forces.
- Controls vibration, shock and noise.
- Resistant to oil and cleaning compounds.
- Meets OSHA requirements for anchoring machinery.
- Save on installation costs, no cementing required.
- Economical and can be reused when relocating or on other machines.
- Strong, reliable construction provides long life.
- Increases machine accuracy and extends life of machinery and tools.



| Type | Maximum load in lbs | | Level Adjustment | Bolt Size | Mount Dimensions (ins) | |
|-------|----------------------|------------------|------------------|-------------|------------------------|-------|
| | Non-Impact Machinery | Impact Machinery | | | A | H |
| NVS-1 | 1500 | 1000 | 1/2" | 1/2-13 x 6" | 3-1/2 | 1-1/2 |
| NVS-2 | 4500 | 3000 | 1/2" | 5/8-11 x 8" | 5-1/2 | 2 |
| NVS-3 | 10000 | 7000 | 1/2" | 1-14 x 8" | 9 | 2-1/4 |
| NVS-4 | 15000 | 10000 | 1/2" | 1-14 x 8" | 9 | 2-1/4 |
| NVS-5 | 25000 | 17000 | 1/2" | 1-1/2-6x12" | 14 | 5-1/4 |
| NVS-6 | 40000 | 25000 | 1/2" | 1-1/2-6x12" | 14 | 5-1/4 |

LOAD VS DEFLECTION:

